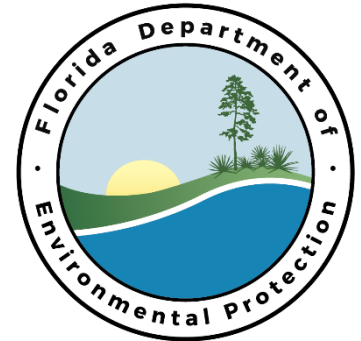


# Franklin-98 Living Shoreline

Apalachee Regional Planning Council Board Meeting  
November 21, 2019

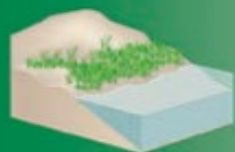


# HOW GREEN OR GRAY SHOULD YOUR SHORELINE SOLUTION BE?

## GREEN - SOFTER TECHNIQUES

## GRAY - HARDER TECHNIQUES

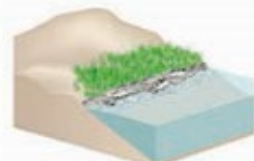
### *Living Shorelines*



**VEGETATION ONLY** - Provides a buffer to upland areas and breaks small waves. Suitable for low wave energy environments.



**EDGING** - Added structure holds the toe of existing or vegetated slope in place. Suitable for most areas except high wave energy environments.



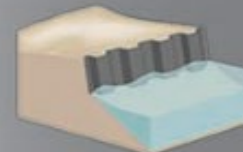
**SILLS** - Parallel to vegetated shoreline, reduces wave energy, and prevents erosion. Suitable for most areas except high wave energy environments.



**BREAKWATER** - (vegetation optional) - Offshore structures intended to break waves, reducing the force of wave action, and encourage sediment accretion. Suitable for most areas.



**REVETMENT** - Lays over the slope of the shoreline and protects it from erosion and waves. Suitable for sites with existing hardened shoreline structures.

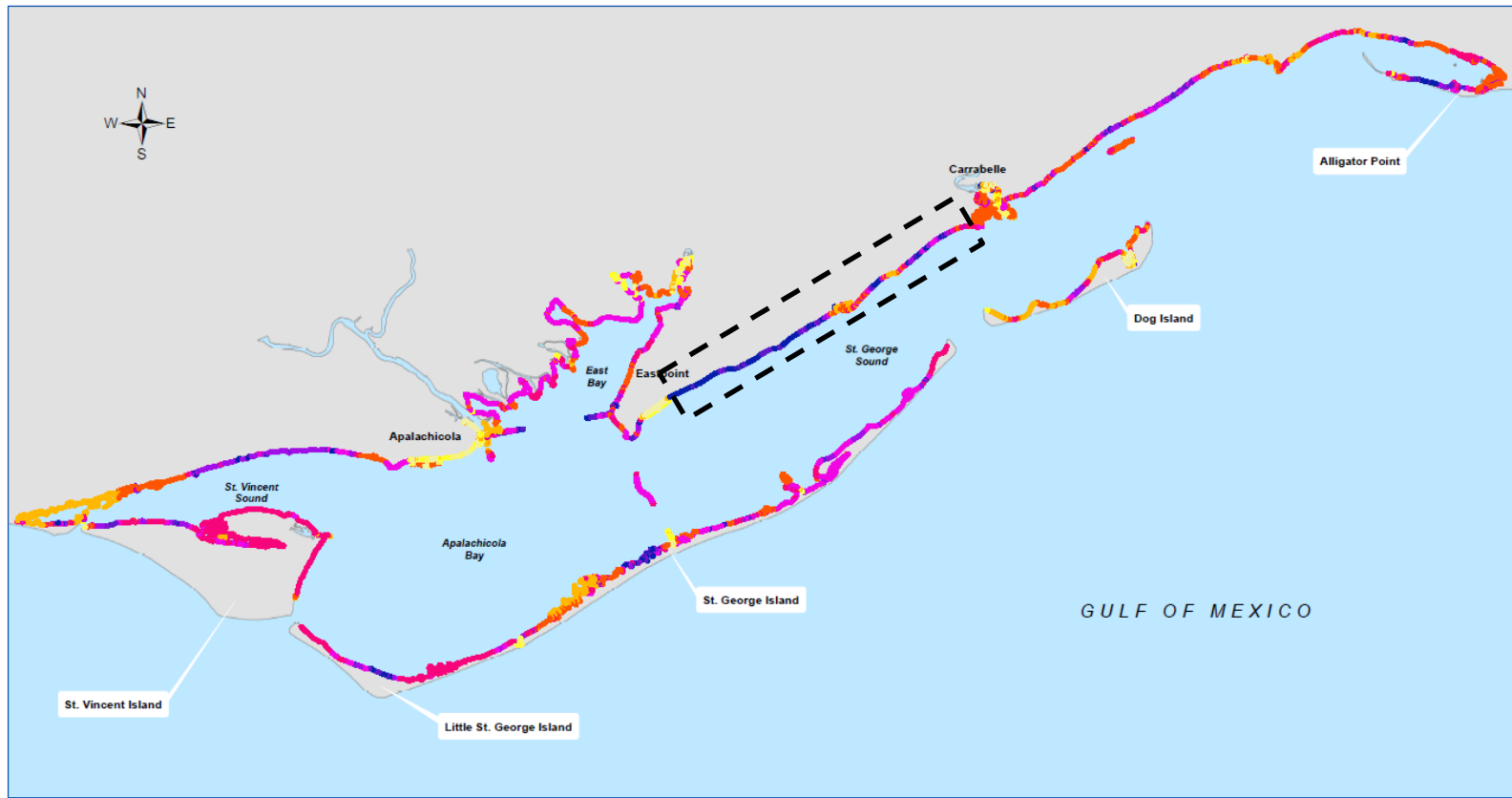


**BULKHEAD** - Vertical wall parallel to the shoreline intended to hold soil in place. Suitable for high energy settings and sites with existing hard shoreline structures.

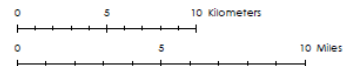
# Estuarine habitats provide protection



# SHaRC Composite Analysis (All Factors Combined)



Data Sources: Florida Department of Environmental Protection, Florida Fish and Wildlife Conservation Commission, and National Oceanic and Atmospheric Administration



Lowest Priority

Highest Priority

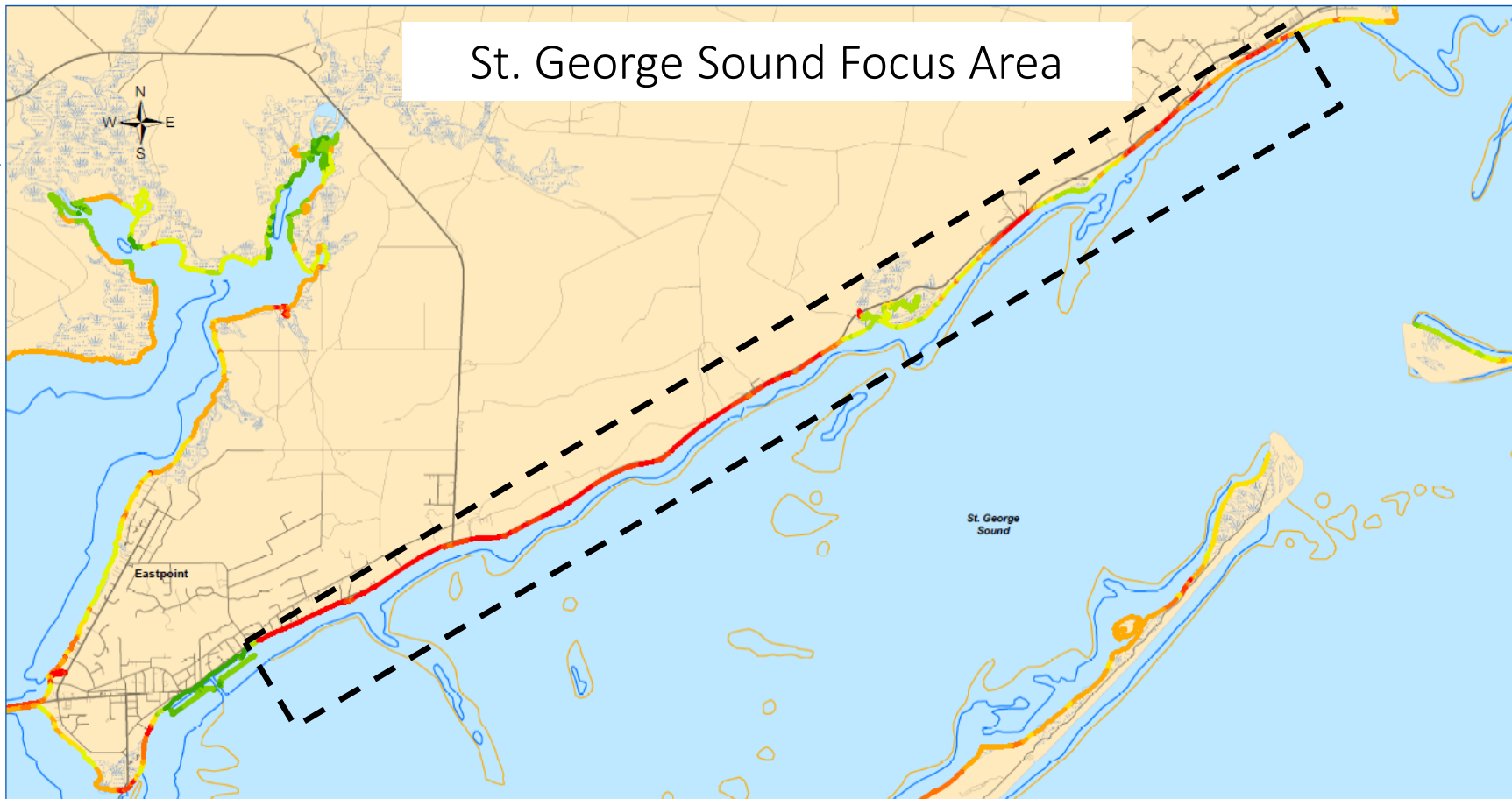


ecology and environment, inc.  
Global Environmental Specialists

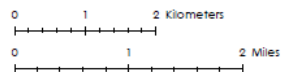
SHORELINE HABITATS AND RESILIENT COASTS  
FIGURE 3-1 - COMPOSITE ANALYSIS (WEIGHTED SUM)

Apalachicola Bay,  
Florida

# St. George Sound Focus Area



Data Sources:



Ecology and Environment, Inc.  
Global Environmental Operations

SHORELINE HABITATS AND RESILIENT COASTS  
ST. GEORGE SOUND FOCUS AREA

Apalachicola Bay,  
Florida

# Basic Facts

---

- Study Area
  - Approximately 12 miles long
  - Ownership (nearly 350 parcels with shoreline)
  - Existing shoreline armoring in many areas
  - Mostly unvegetated, with a few small patches of marsh



# Existing Conditions





## Current Activities (under \$125K FDEP Grant)

---

- Stakeholder Engagement Meetings
- Background Investigations
- Habitat Suitability Analysis and Materials Evaluation
- Seagrass Mapping
- Coastal Conditions Analysis

# Meeting Schedule

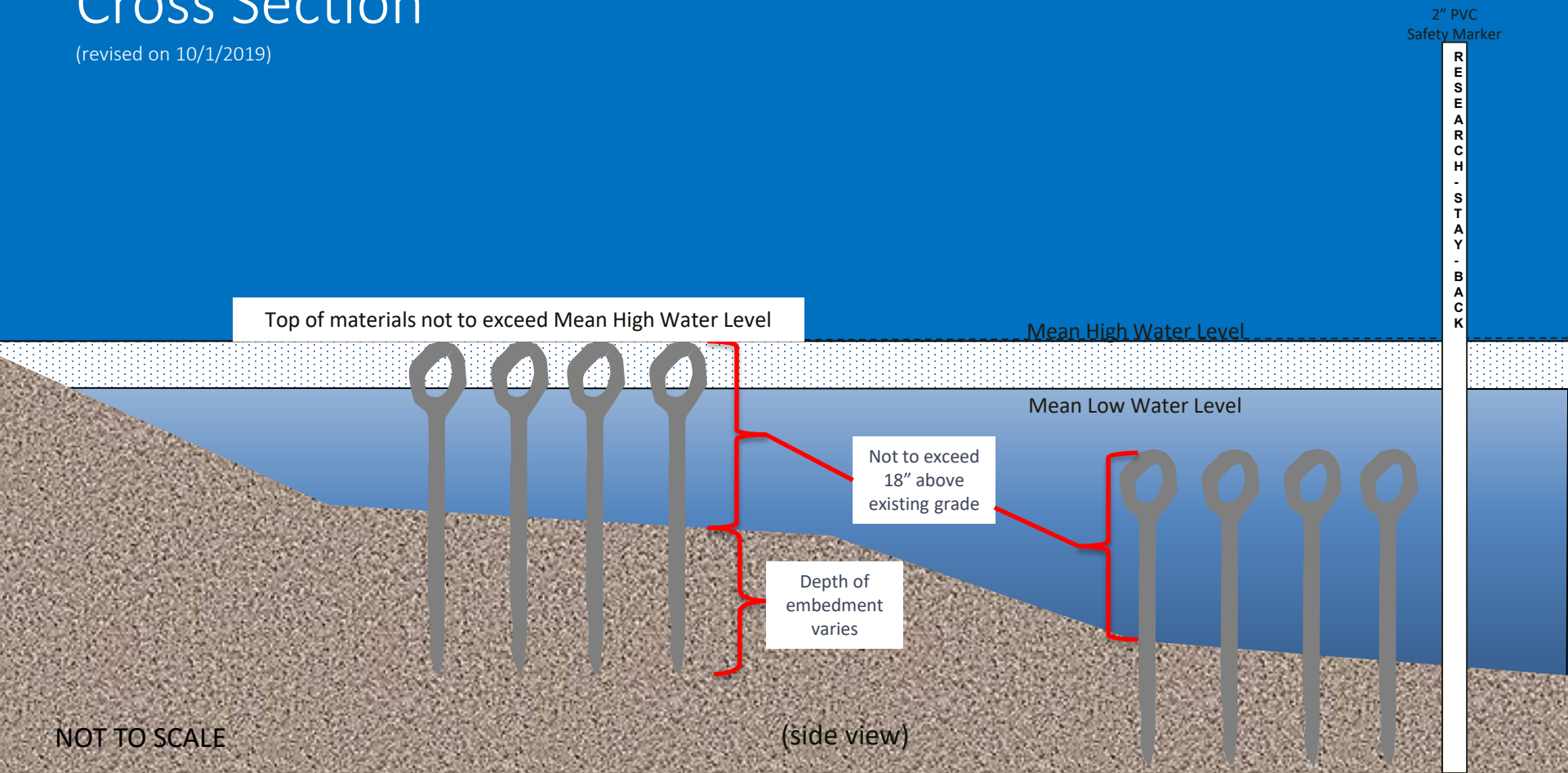
Meeting	Tentative Date	Objectives/Topics
1 <sup>st</sup> Agency Mtg	Oct. 24 (daytime)	Background, goals/constraints/vision
1 <sup>st</sup> Stakeholder Mtg	Nov. 12 (evening)	Background, goals/constraints/vision
2 <sup>nd</sup> Agency Mtg	Nov. 22 (daytime)	Share data, discuss conceptual ideas, etc.
2 <sup>nd</sup> Stakeholder Mtg	Dec. 4 (evening)	Share data, discuss conceptual ideas, etc.
3 <sup>rd</sup> Agency Mtg	Jan. 7 (daytime)	Share data, discuss conceptual ideas, etc.
3 <sup>rd</sup> Stakeholder Mtg	Jan. 14 (evening)	Share data, discuss conceptual ideas, etc.
4 <sup>th</sup> Stakeholder Mtg	Feb. 4 (evening)	Share data, discuss conceptual ideas, etc.

# Oystercatcher Products (Sandbar Oyster Company)



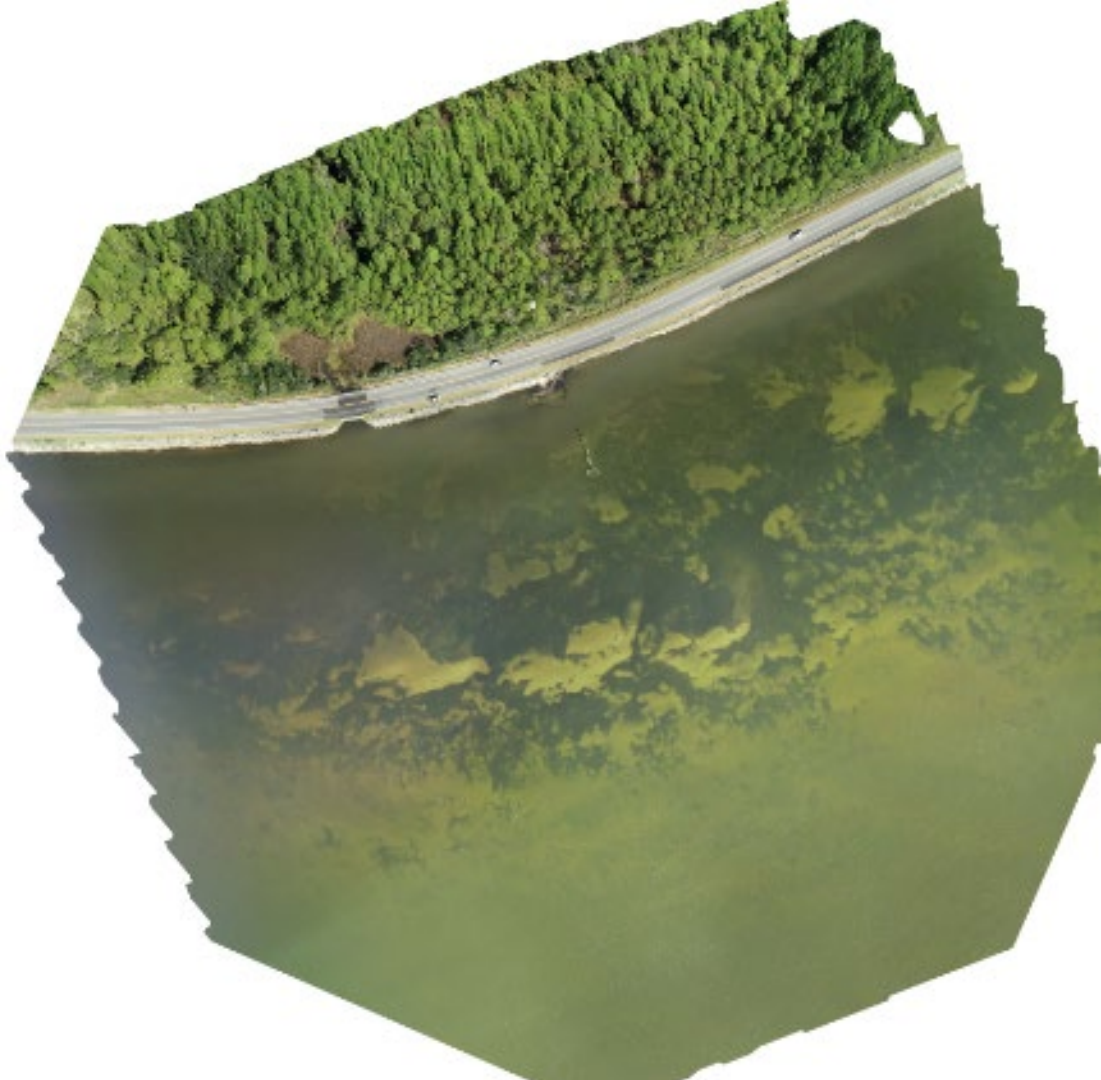
# Cross Section

(revised on 10/1/2019)



NOT TO SCALE

(side view)



# Topics Discussed at First Two Meetings

---

- Historic knowledge
  - What do you remember about the past?
  - What activities occur in the area, now and in the past?
  - What is the public's perception of the area?
  - Other thoughts/memories?
- Project Goals/Vision
- Potential Constraints

# Next Steps

- Continue early planning and feasibility study under FDEP Florida Coastal Management Program (\$125K awarded FY19/20)
- Seek project funding for design/permitting/construction
  - Two other NFWF grant applications pending
  - Identify additional resources and partnering opportunities
  - Seek additional letters of support/commitment
- Gather additional knowledge, data, reports, etc.
- Continue engaging with stakeholders

Please follow the project on Facebook [www.facebook.com/livingshore](https://www.facebook.com/livingshore)

# Questions?

Rick Harter  
[rharter@ene.com](mailto:rharter@ene.com)  
(850) 591-6957



Josh Adams  
[jadams@thearpc.com](mailto:jadams@thearpc.com)  
(850) 488-6211 ext. 104

