



---

**EDA Resources for Economic  
Recovery and Resiliency**

**Resilient Apalachee Workshop**

**North Blountstown, Florida**

February 27, 2019

---



**EDA's mission** – to lead the federal economic development agenda by promoting innovation and competitiveness, preparing American regions for growth and success in the worldwide economy.

---



EDA is an small agency within the U.S. Department of Commerce with an annual budget of approximately \$250M (fluctuating in recent FYs)

EDA is predominantly a grant-making agency



Investments in infrastructure, capacity building and business development that attract private capital investments and high quality jobs to Regions experiencing substantial and persistent economic distress.





- State, county, city or other political subdivision of a State
- District Organizations (Economic Development Districts)
- Indian Tribes
- Colleges and Universities
- Non-profit organizations\*

\*Requires local government support

**Public Works Program**—Supports the construction, expansion or upgrade of essential public infrastructure and facilities.

**Economic Adjustment Assistance Program**—Provides a wide range of technical, planning, and public works and infrastructure assistance in regions experiencing adverse economic changes that may occur suddenly or over time.

- **Planning Program**
- **Regional Innovation Strategies**
- **Trade Adjustment Assistance for Firms**
- **University Centers**
- **Research and National Technical Assistance**
- **Local Technical Assistance Program**

## Construction

- Infrastructure improvements
- Specialized facilities (R & D/Technology)
- Business incubators
- Workforce training facilities
- Airport/Port facilities
- Industrial Parks
- Other



## Non-Construction

- Disaster recovery strategies
- Target industry studies
- Revolving loan funds
- Other



Through its competitive grant process, EDA evaluates all project applications to determine the extent to which they:

- Align with EDA's investment priorities;
  - Create or retain high-quality jobs;
  - Leverage public and private resources;
  - Demonstrate the ability to start the project quickly and use funds quickly and effectively; and
  - Provide a clear scope of work and specific measurable outcomes.
- 
- EDA's Investment Priorities:
    - ❖ Recovery and Resilience
    - ❖ Critical Infrastructure
    - ❖ Workforce Development and Manufacturing
    - ❖ Exports and Foreign Direct Investments

## EDA investments Create Jobs and Leverage Private Funds



- ★ **EDA provides economic tools and seed investments** to state and local governments, tribal organizations, universities, and non-profits in communities and regions suffering from severe economic distress
- ★ **EDA targets its investments** to attract private investment and support long-term job creation
- ★ **EDA investments are focused** on locally-developed, regionally-owned economic development strategies that directly contribute to economic development
- ★ **EDA is helping communities compete** in the 21st century by making catalytic investments that support regional competitiveness, innovation, and entrepreneurship



# EDA and Disaster Recovery



**EDA has a long history of successfully supporting disaster recovery and resiliency efforts.**

**EDA's role in disaster recovery is to facilitate the timely and effective delivery of Federal economic development assistance to support:**

- Long-term community economic recovery planning;
- Implementation of recovery projects;
- Resiliency and restoration activities.

**Economic Recovery** is the ability to **return** economic and business activities (including agricultural) to a state of health and **develop** new economic opportunities that result in a sustainable and economically viable community.

St. Croix, USVI



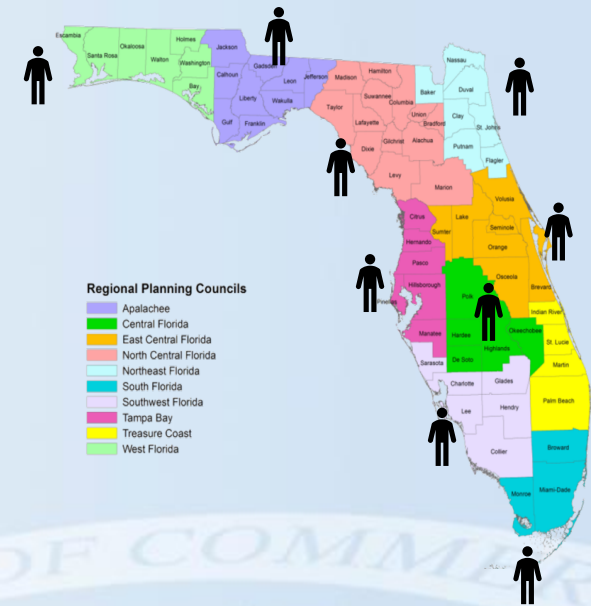
- Under the [Bipartisan Budget Act of 2018 \(PL 115-123\)](#), signed in February, Congress provided EDA with **\$600M** in additional Economic Adjustment Assistance (EAA) Program funds for **disaster relief and recovery**. EDA anticipates awarding:
  - **\$587M** in grants to assist communities experiencing economic distress or economic harm resulting from:
    - Hurricane Harvey (TX, LA)
    - [Hurricane Irma \(FL, GA, SC, PR, VI\)](#)
    - Hurricane Maria (PR, VI)
    - Wildfires and other Federally-declared natural disasters occurring in calendar year 2017
  - \$1M for OIG investigations and audits
  - Up to 2% to cover EDA salaries and expenses

To help communities and regions recovering from Federally declared disasters devise and implement long-term economic recovery strategies through a variety of non-construction and construction projects, including:

- Development of disaster recovery strategies (“strategy grants”)
- Implementation of recovery projects:
  1. Rebuilding damaged infrastructure/construction projects
  2. Capitalizing revolving loan funds with disaster nexus
  3. Disaster resilience activities
  4. Other activities eligible for support under the EAA program, as long as assistance is related to the area’s disaster recovery

# Disaster Recovery Projects

2017-2018: EDA funded nine (9) disaster recovery coordinator positions to support local and regional recovery efforts.



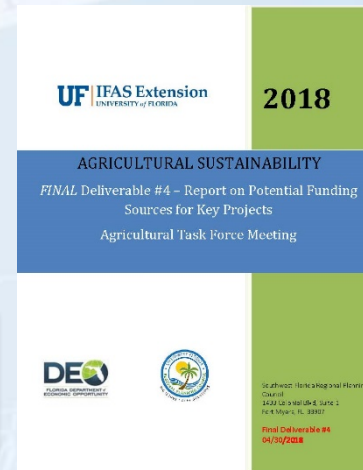
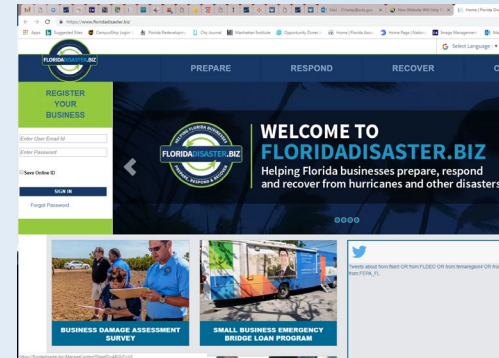
2017: \$175,000 EDA grant to IEDC to support its statewide Economic Recovery Assistance volunteer program.

The screenshot shows the homepage of the RESTORE YOUR ECONOMY .ORG website. The header includes the logo and the tagline "Disaster Preparedness • Economic Recovery • Resilience". A navigation menu contains links for Home, About, Preparedness, Recovery, Resources, Events, and Contact Us. The main content area features a large banner with the text "Volunteer to Support Hurricane Economic Recovery Efforts" and a link to "www.iedc.org/HelpForHurricanes". Below the banner, there are sections for "News & Resources" and "Welcome". The "News & Resources" section includes articles such as "IEDC's Jeff Flinks Talks Economic Recovery Post-Hurricanes in Puerto Rico" and "Community Colleges' Roles in Economic Diversification". The "Welcome" section provides an overview of the organization's mission and resources.

# Disaster Recovery Projects

Additional projects funded in calendar year 2018 include:

1. DEO: [www.floridadisaster.biz](http://www.floridadisaster.biz) website update
2. DEO – Statewide RLF to support business recovery and resiliency
3. City of North Miami – Industry diversification study
4. SWFRPC – Regional sustainability study (Small farm sector)
5. CFRPC – Strategic action plan (Aviation industry)
6. WFRPC – Disaster recovery coordinator



Additional projects to be funded in 2019 are currently being reviewed.

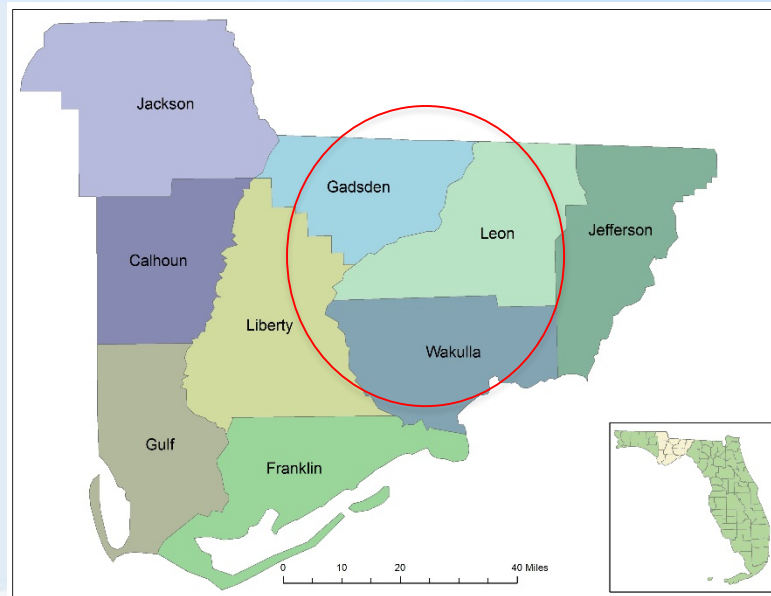
# Working with EDA





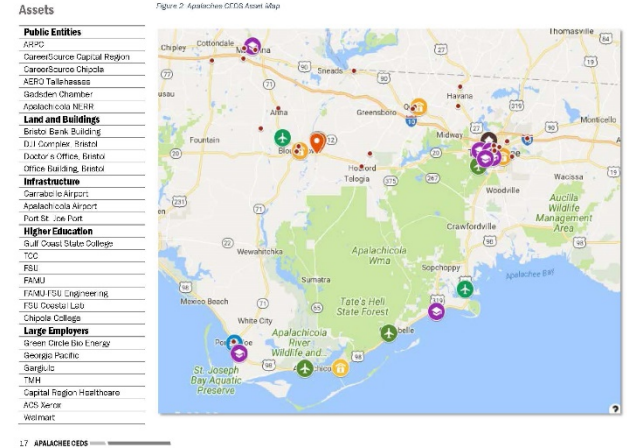
## Apalachee Regional Planning Council (ARPC) is the federally-designated Economic Development District for the nine-county region of Florida.

- EDA looks to ARPC to:
  - Prepare and maintain a CEDS
  - Assist with implementation strategies identified in the CEDS
  - Provide technical assistance to local governments/EDOs on economic development initiatives, programs and grant applications
  - Demonstrate support of funding applications to EDA



EDA supports bottom-up strategies that build on regional assets to spur economic growth and resiliency.

Grantees are encouraged to develop initiatives that present new ideas and creative approaches to advance economic prosperity in distressed communities.

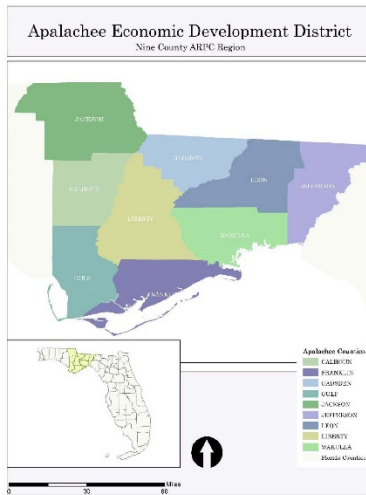


## Introduction

The Apalachee Region is bouncing back from the recession of 2008, however not all facets of economic and community health are uniformly improving, nor are the data between counties similar. Leon, Jackson and Gadsden counties have the largest Gross Domestic Product; however, Gadsden also registers last on State America's Economic Well Being Index. Conversely, Wakulla County scores higher than Leon on that same metric. This section will touch on the findings presented in the Data Appendix, page 41, in greater detail.

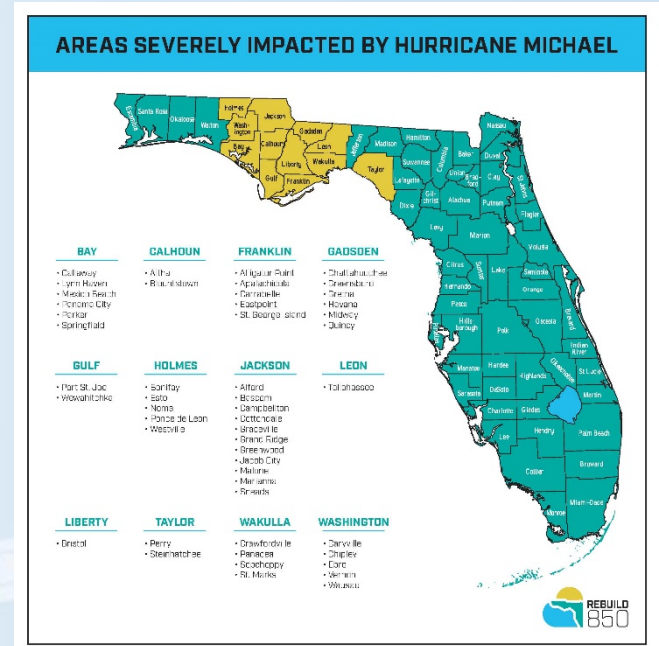
The most recent CEDS 2013-2014 goals and 59 objectives. While the 2018 CEDS created new objectives inspired by the latest round of stakeholder input, the 2013 objectives persist in importance:

- Promote start-ups and entrepreneurship,
- Integrate comprehensive planning.
- Fortify the talent supply chain.
- Encourage further economic diversification.
- Enhance transportation, broadband, and leadership training access.
- Improve public-private information flows.
- Meld sustainability to economic development.
- Promote eco-tourism.
- Better serve impoverished residents.

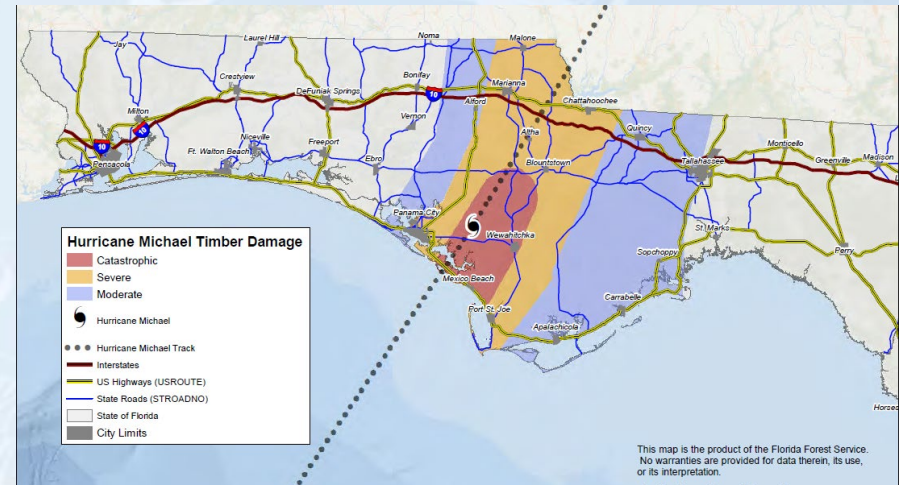


In light of long-term damage and losses to:

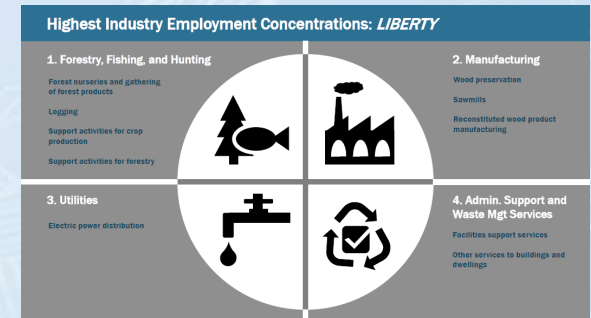
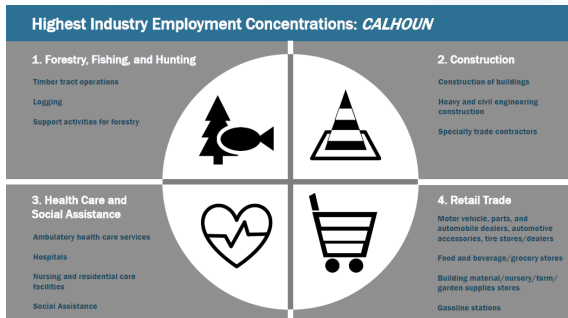
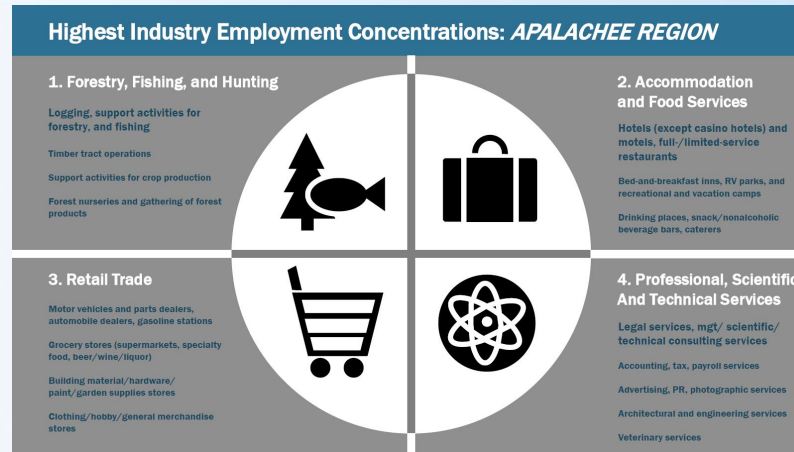
- Agriculture and timber
- Businesses and industry
- Residential and commercial structures
- Critical infrastructure



What does long-term economic recovery and resiliency mean in your community?



The ARPC CEDS has identified the leading industry sectors of its region.



# Sample Funded Projects



# Sample Funded Projects

2018: \$80,000 EDA grant (EA) under the FY 18 Disaster Supplemental to Hendry County for a broadband feasibility study.

**BroadbandUSA**  
Connecting America's Communities

50% increase in the number of business hours, connecting citizens to government services and services

67 percent of Americans search online for local products or services. It's just half of what businesses have websites

Going digital can save schools or entities up to \$100 per student per year

Telehealth reduces hospital admissions by 25 percent and overall length of stay by 38 percent

### Why does broadband matter?

Broadband is vital infrastructure that allows Americans work and live. It's essential for helping communities attract economic investment, create new jobs, expand educational opportunities, improve digital and e-government services, health outcomes and address public safety. Improving connectivity allows more Americans to participate in the modern economy.

### What does BroadbandUSA do?

- Educate** - Announcements and community leaders with **webinars, newsletters and webinars** that help the public understand the importance of broadband initiatives
- Convene** - Local webinars and events to **advance the conversation** and **share lessons learned** regarding broadband connectivity and digital inclusion
- Assist** - Provide **technical assistance** to communities and partners seeking **planning, funding and implementation support** for their broadband projects



### Are you ready for broadband?

#### Contact us today.

If you are interested in receiving technical assistance from BroadbandUSA, please email us at [BroadbandUSA@edagovhq.gov](mailto:BroadbandUSA@edagovhq.gov) or call us at 877-867-2663. For more information about BroadbandUSA, visit our website at [www.EconomicDevelopment.gov/BroadbandUSA](http://www.EconomicDevelopment.gov/BroadbandUSA).

### About NTIA

The National Telecommunications and Information Administration is the U.S. Department of Commerce's "No Executive Branch" agency principally responsible for advising the President on telecommunications and information policy issues.

NTIA's program will provide a significant role in expanding broadband access and adoption in America, helping the state of opportunity of all users and ensuring that the Internet remains an engine for continued innovation and economic growth.



**COMPETITIVE FLORIDA ASSET MAPPING REPORT**  
Florida Department of Economic Opportunity

**2017**

DEO  
FLORIDA DEPARTMENT OF ECONOMIC OPPORTUNITY

COMPETITIVE FLORIDA  
ECONOMIC OPPORTUNITY

2017: \$483,000 EDA grant (i6 Challenge) to Florida A & M University Research Entrepreneurship and Commercialization Hub (FAMU REACH).

2017: \$118,000 EDA grant (University Center) to Florida A & M University to establish its University Center – FAMU Innovation Center to support technology commercialization and regional economic development.

## FAMU Expands 'REACH' in Entrepreneurship, Innovation, and Economic Development

NOVEMBER 3RD, 2017 KANYA STEWART ([HTTP://WWW.FAMUNEWS.COM/AUTHOR/KANYA-STEWARTFAMU-EDU/](http://www.famunews.com/author/kanya-stewartfam-u-edu/))  
NEWS ([HTTP://WWW.FAMUNEWS.COM/CATEGORY/NEWS/](http://www.famunews.com/category/news/)), STEM ([HTTP://WWW.FAMUNEWS.COM/CATEGORY/NEWS/STEM/](http://www.famunews.com/category/news/stem/))



As the nation prepares to celebrate small businesses in November, Florida A&M University (FAMU) is building a one-of-a-kind innovation ecosystem that is designed to inspire and extend a culture of entrepreneurship across the region, state and ultimately the nation.

FAMU recently received more than \$1 million in federal funding to strengthen entrepreneurship and technology commercialization on campus and in the community and will use the funds to form the Research, Entrepreneurship and Commercialization Hub also known as REACH.

# Sample Funded Projects

2017: \$1,000,000 EDA grant (PW) to Embry-Riddle Aeronautical University to help build the Applied Aviation and Engineering Research Hangar in Volusia County.



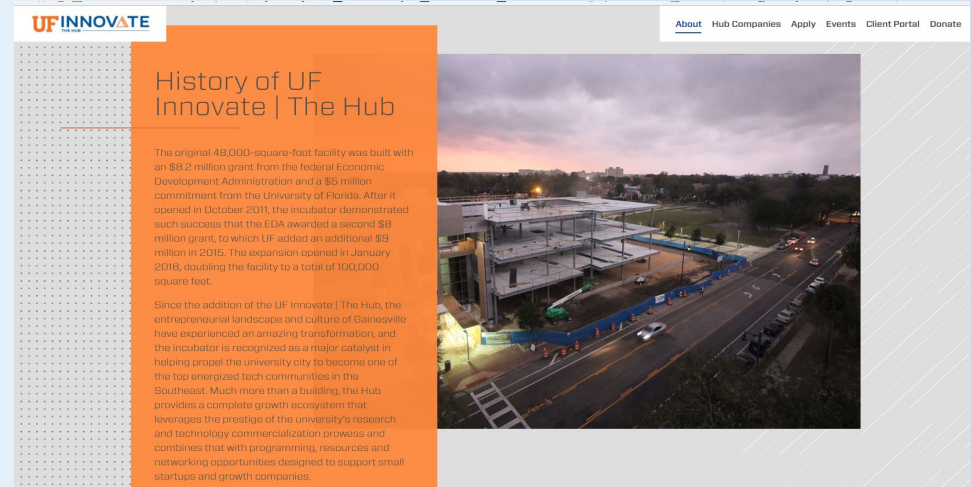
2016: \$2.2 million EDA grant (PW) to Osceola County BCC, University of Central Florida and ICAMR to construct a smart sensor technology development and prototype manufacturing cleanroom.



**BRIDG**

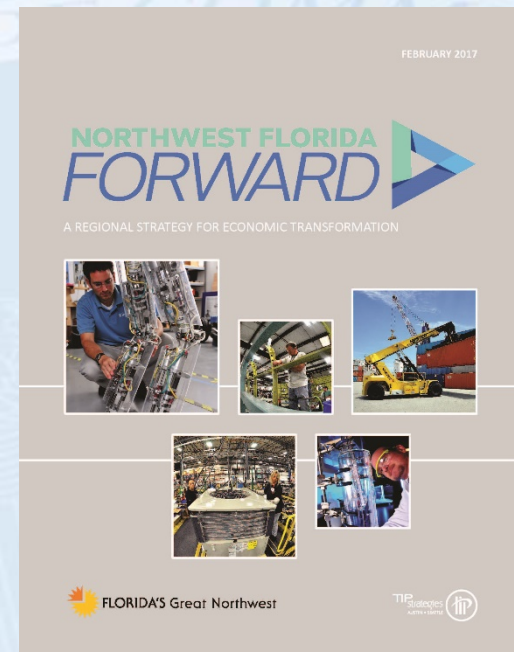


2016: \$8.0 million\* EDA grant (EA) to University of Florida to construct Phase II of the Florida Innovation HUB at UF in Gainesville.



*\*Special circumstance*

2016: \$340,000 EDA grant (EA) to University of West Florida in partnership with Florida's Great Northwest to develop a 13-county regional economic diversification strategy.



# Sample Funded Projects

2015:           \$1,500,000 EDA grant (PW) to Tallahassee Community College to enable the construction of the Wakulla Environmental Institute in Wakulla County.



2013:           \$364,000 EDA grant (EA) to City of Fellsmere to construct an access road to facilitate the construction of an organic aquaculture plant.



Greg Vaday, AICP  
Economic Development Representative  
U.S. Economic Development Administration  
401 West Peachtree St., N.W., Suite 1820  
Atlanta, Georgia 30308  
Phone: (404) 730-3009  
Email: [gvaday@eda.gov](mailto:gvaday@eda.gov)