

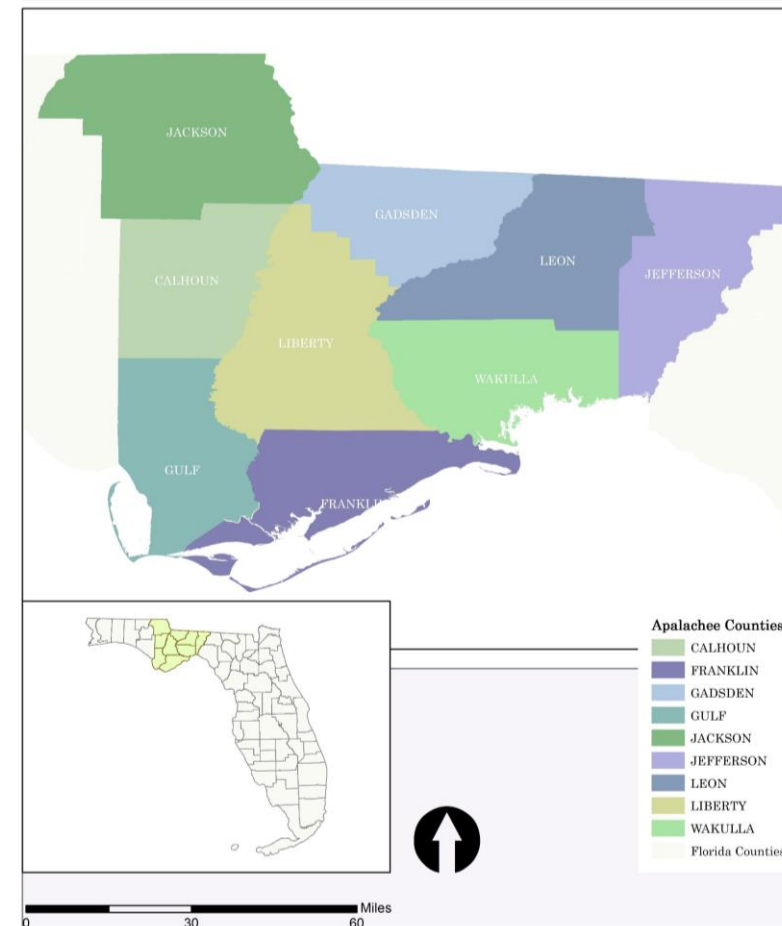


Planning, Developing and Enhancing the Apalachee Region

ARPC Serves Apalachee



The Apalachee Regional Planning Council's mission is to serve its citizens and local governments by providing technical assistance and a forum for communication and collaboration to preserve and enhance the economic, natural and social environments of the Apalachee Region.



Economic Development



Coordination and Technical Assistance for a variety of projects.



Economic Development



From Designated EDD to Regional Economic Developer

- The Council is a designated Economic Development District, which requires writing and updating the CEDS and providing technical assistance.
- Funded through an EDA Planning Grant.



Economic Development

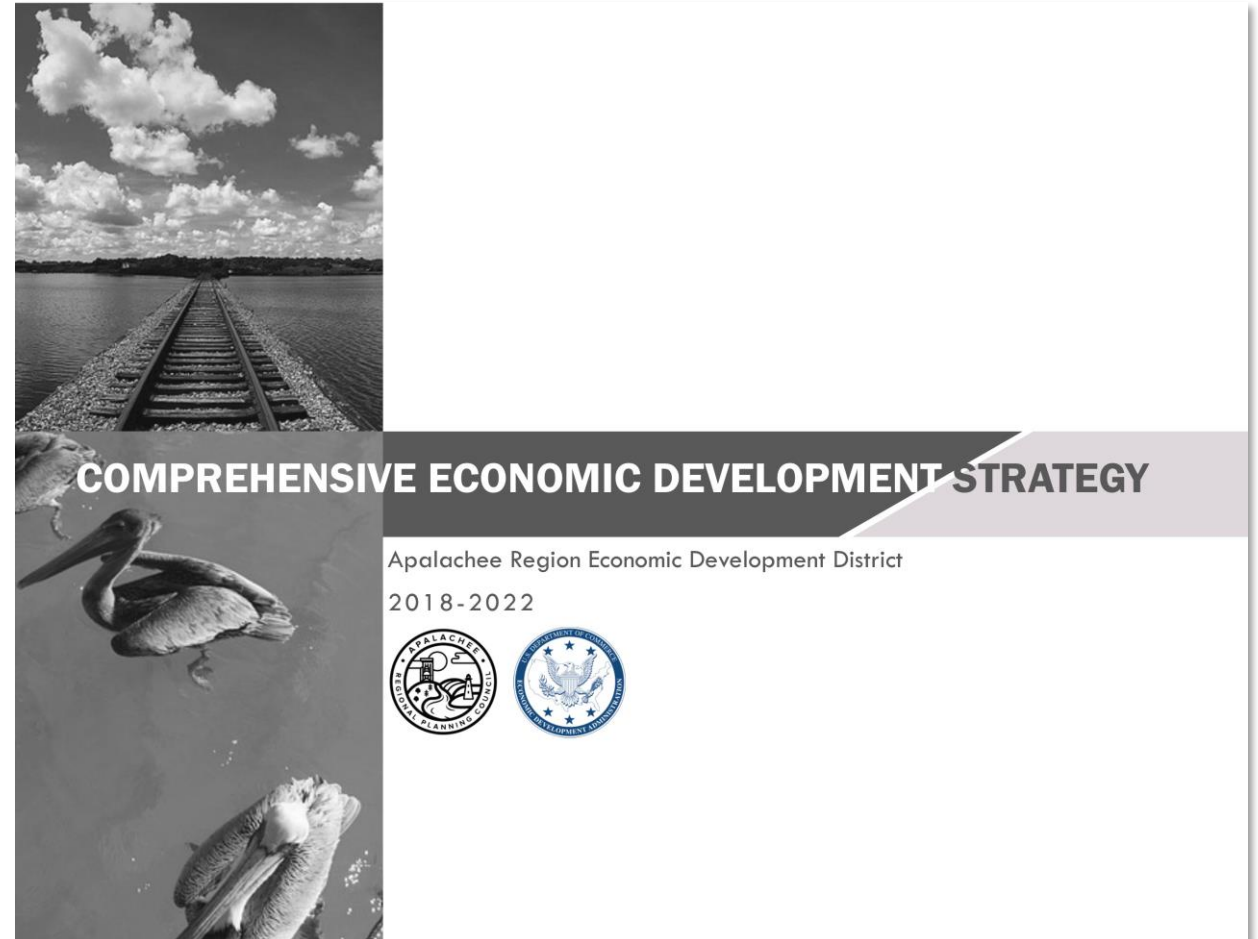


CEDS

2018-2022 Update Completed

- 3 Overarching Goals
- 35 Objectives

Broad applicability, useful for organizational planning and grant development.

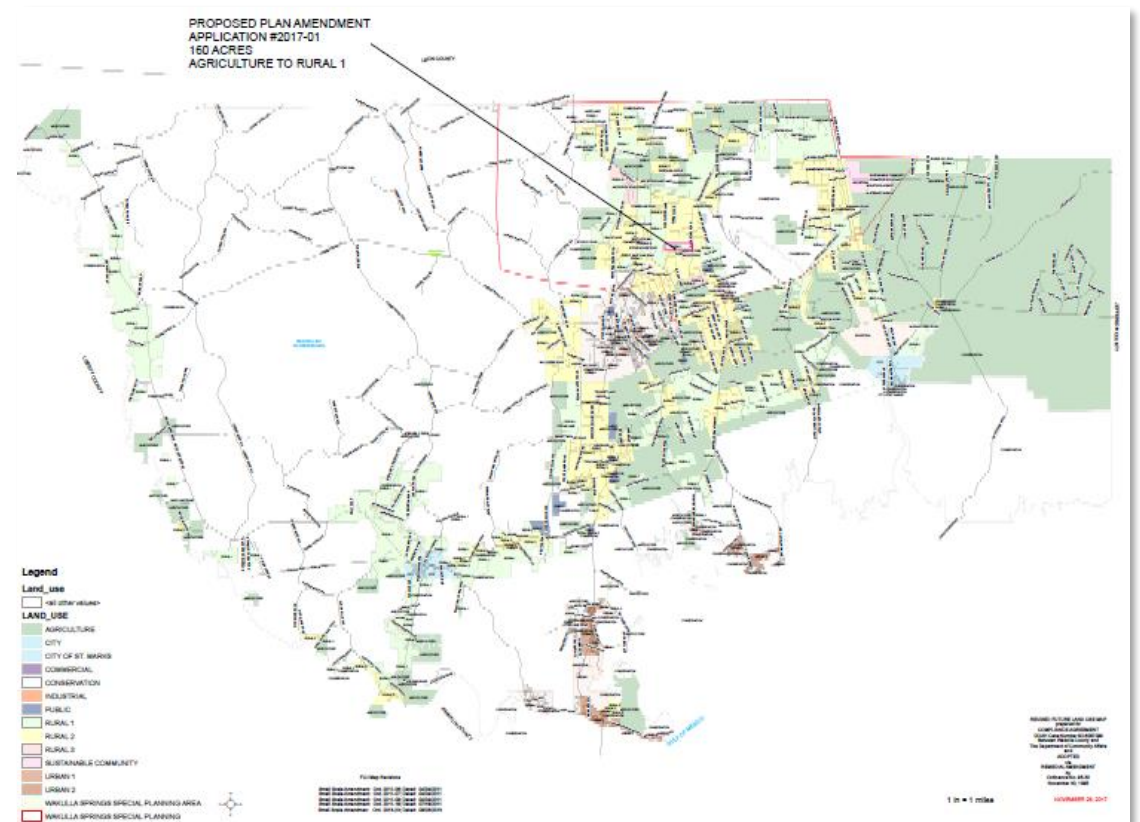


Economic Development



Comprehensive Planning, Intergovernmental Coordination, Other Coordination

- Comp Plan Reviews
- Project Review for USDA and other submissions.
- Tourism Promotion Groups, Main Street, Scenic Highway, Economic Development Groups.



Economic Development



Looking Forward to 2018

- Assist with 1 or more EDA grants.
- Assist with 2 or more DEO grants.
- Provide planning assistance to 3 or more communities.

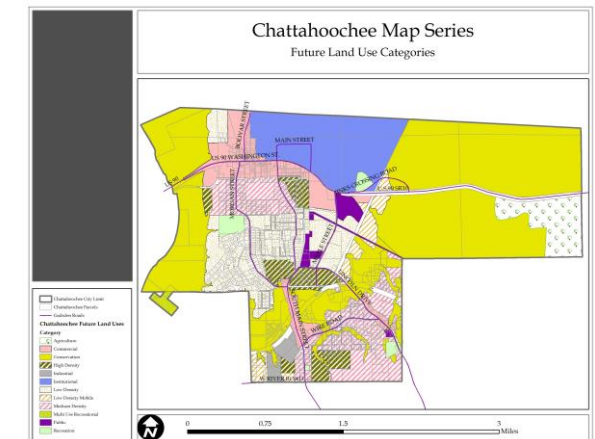
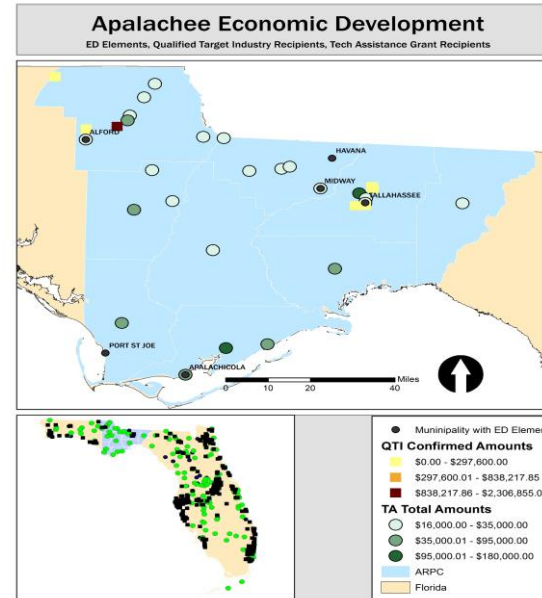


GIS (Geographic Information Systems)



Program Development

- Several Staff with Master's level GIS course and professional experience.
- Assistant staff member currently finishing Master's in GIS.
- Building full GIS position to serve a variety of county and city needs.

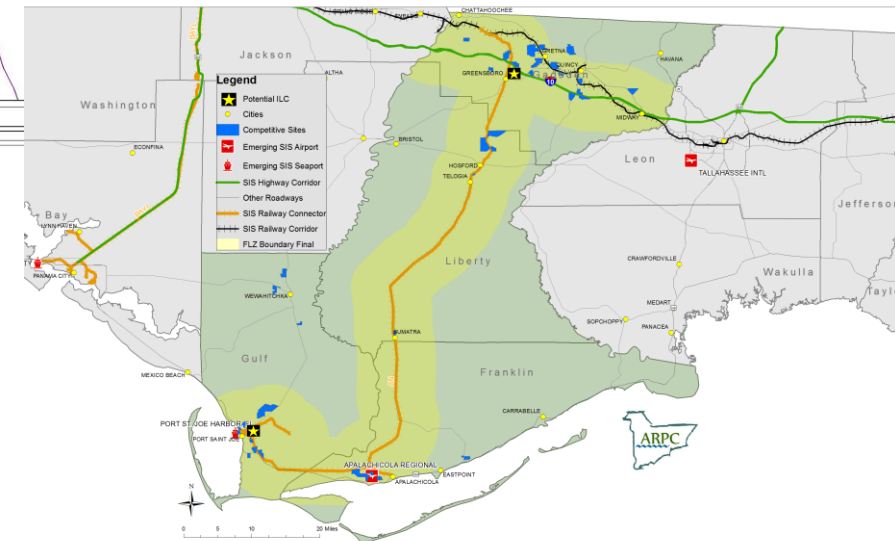
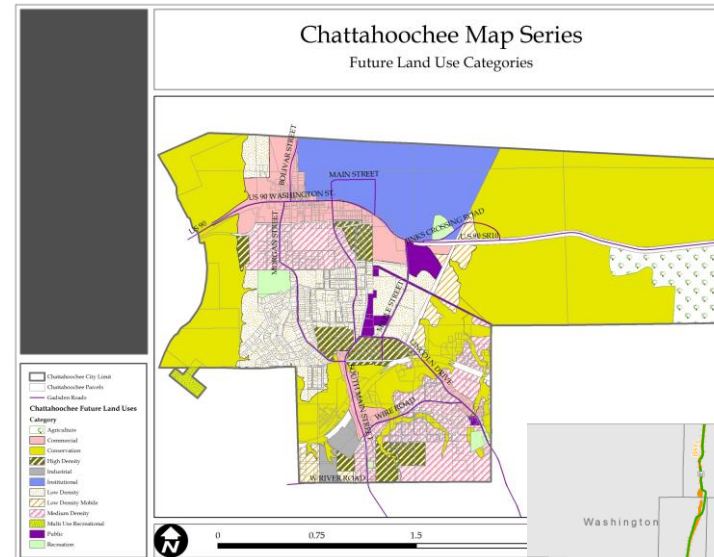


GIS (Geographic Information Systems)



Multi-faceted Project Capabilities

- Comprehensive Plan Map Series
- Transportation Mapping

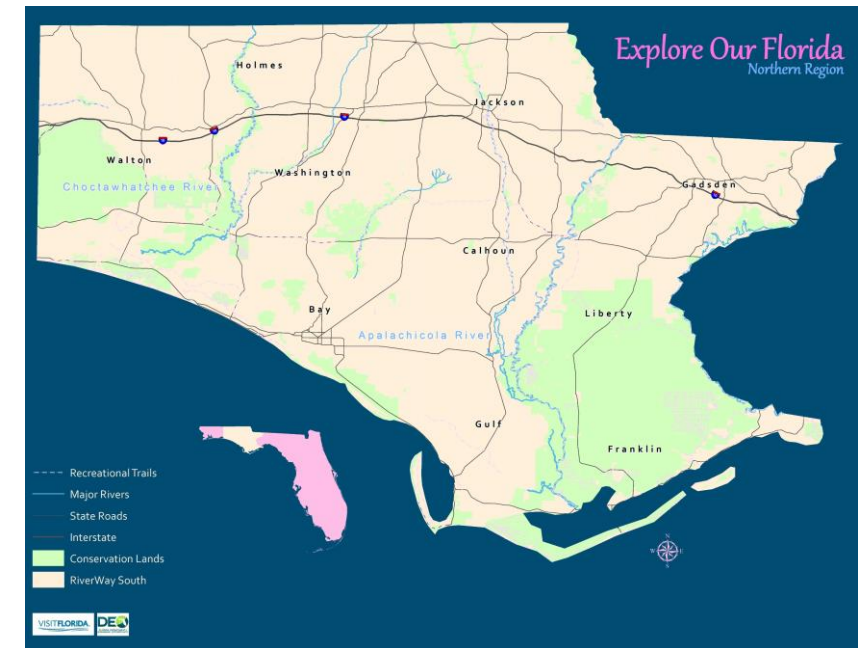
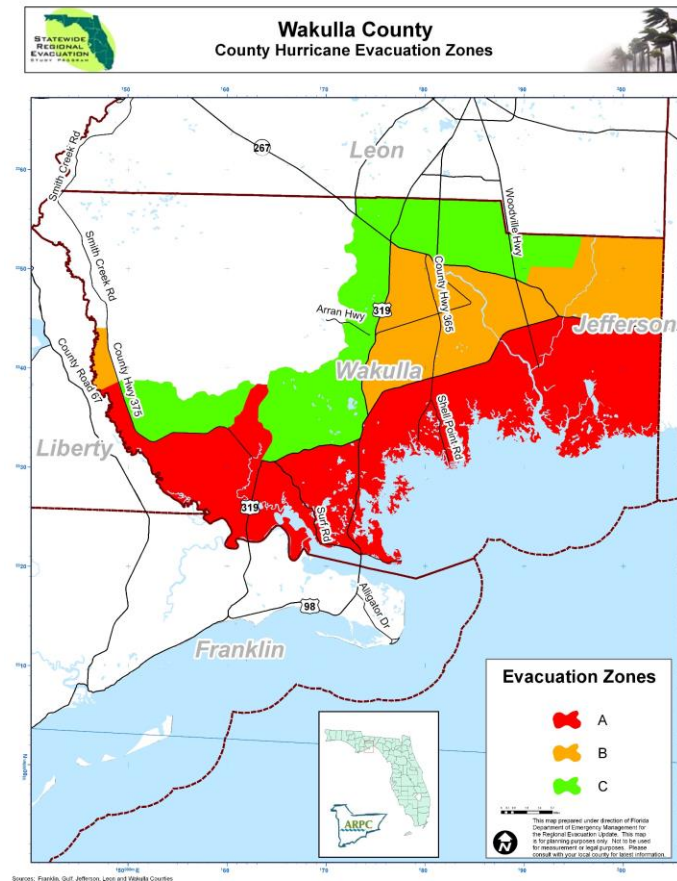


GIS (Geographic Information Systems)



Multi-faceted Project Capabilities

- Hurricane Evacuation Zones
- Tourism Wayfinding

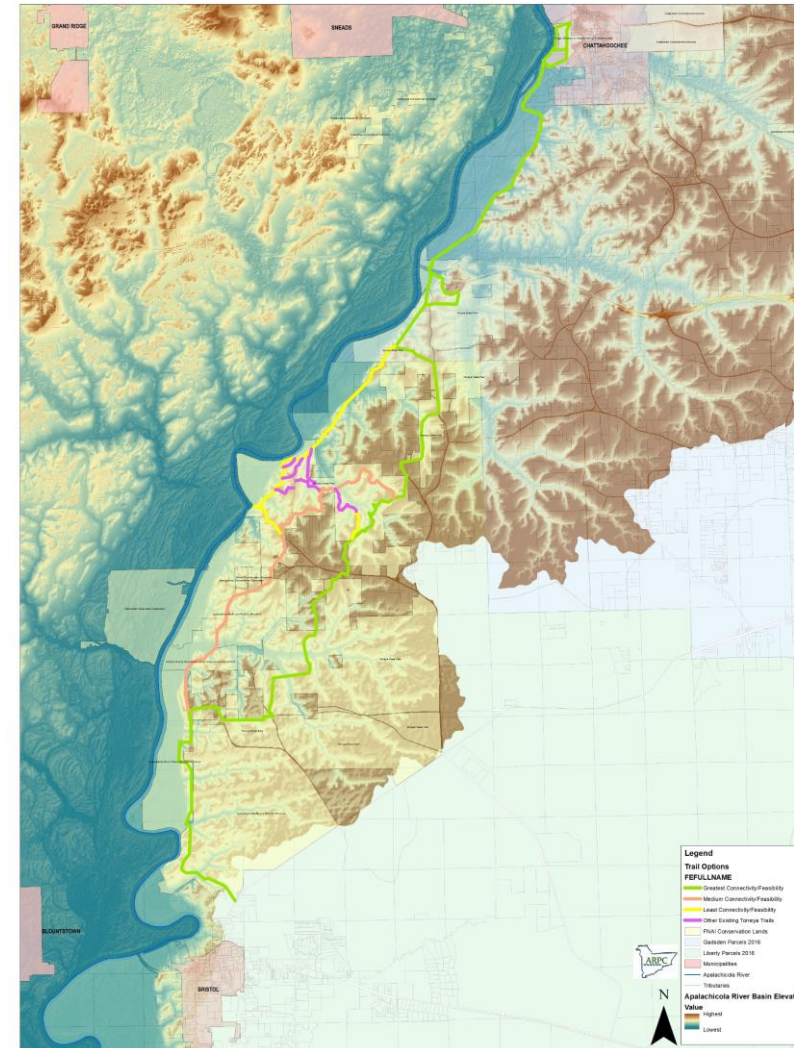
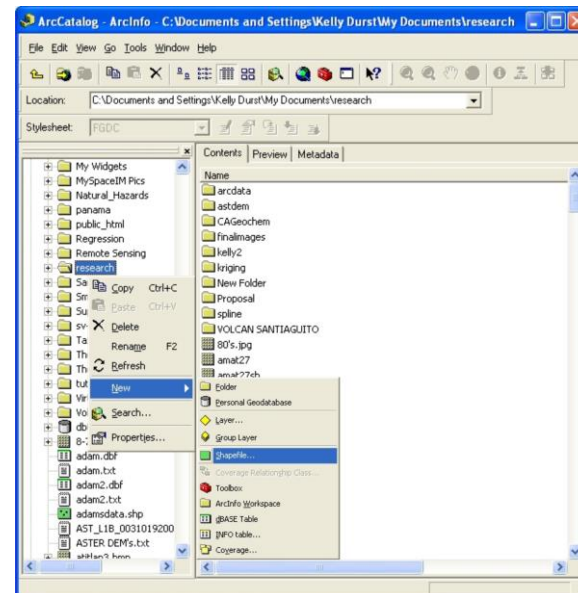


GIS (Geographic Information Systems)



Multi-faceted Project Capabilities

- Trail Feasibility Mapping
- Data Gathering
- Data Reorganization



Revolving Loan Fund



- The ARPC has managed an EDA Revolving Loan Fund since 1984.
- The ARPC RLF provides loans to small businesses in the Region with new or expansion projects that have been previously turned down for conventional financing.
- The ARPC is actively seeking ways to increase the loan funds available for lending and ultimately the number of small businesses receiving loans.



Apalachee Revolving Loan Fund

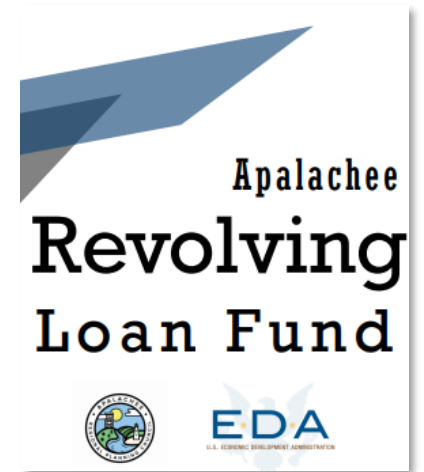


EDA
U.S. ECONOMIC DEVELOPMENT ADMINISTRATION

Revolving Loan Fund

ARPC has managed an EDA Revolving Loan Fund since 1984.

- The ARPC RLF Program began in 1984 with a grant from EDA \$1,000,000 and a CDBG Grant of \$335,000. The entire \$1,335,000 was loaned to Raffield Fisheries in Port St. Joe, for the purpose of saving 100+ jobs and preventing the closure of the company.
- In 1999 the \$1,000,000 was repaid in full and over the course of the next 10 years the remaining \$335,000 balance of the principal was repaid.
- Since 1984 the ARPC has made 49 loans totaling \$4,680,482
- Additionally, \$3,952,000 private sector funds have been invested as leverage for the projects.
- 202 private sector jobs have been created
- 271 private sector jobs have been saved

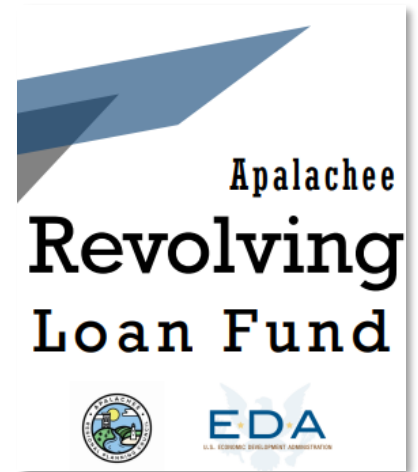


Revolving Loan Fund

The ARPC RLF provides loans to small businesses in the Region with new or expansion projects that have been previously turned down for conventional financing.

Eligibility Criteria

- The applicant will create or retain full-time permanent jobs within the Region.
- The applicant has received documentation of denial for either partial or full funding from a traditional lending institution, such as a bank or credit union.
- The applicant has sufficient collateral to cover the amount of the loan.
- The projects must have adequate collateral and meet the minimum job requirement of 1 new or saved job for every \$10,000 loaned.
- The applicant has a demonstrated ability to re-pay the loan with the terms determined by the ARPC.

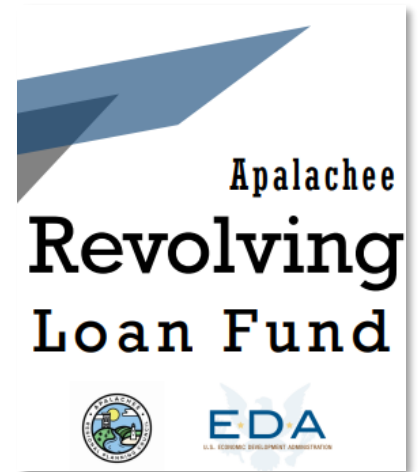


Revolving Loan Fund

The ARPC RLF provides loans to small businesses in the Region with new or expansion projects that have been previously turned down for conventional financing.

Ineligible Loan Requests

- Loans which would assist the relocation of jobs from another labor market;
- Loans that will be used to invest in interest-bearing accounts or other investments not directly related to job creation
- Loans which would create benefits or a potential conflict of interest for any officer or employee of the ARPC
- Loans to pay off existing debt



Revolving Loan Fund

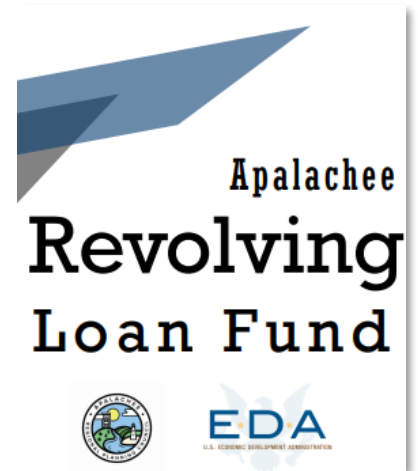
The ARPC RLF provides loans to small businesses in the Region with new or expansion projects that have been previously turned down for conventional financing.

Terms of Loan

The proposed use of funds

The strength (credit worthiness / experience) of the potential borrower

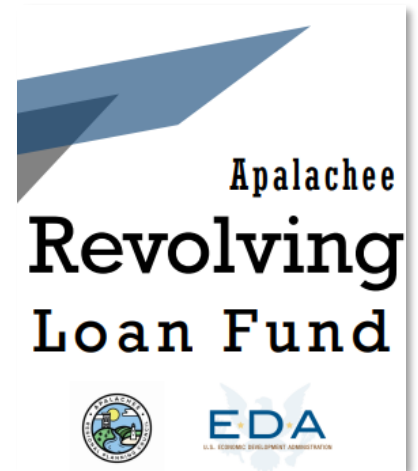
The value and type the collateral offered to secure the loan



Revolving Loan Fund

The ARPC is actively seeking ways to increase the loan funds available for lending and ultimately the number of small businesses receiving loans.

- The ARPC has a total of \$472,000 in outstanding principal balances to 11 borrowers.
- The ARPC currently has \$85,000 available in the Revolving Loan Fund for new loans.
- The ARPC is applying for \$125,000 in additional loan capital from the USDA Rural Development.
- Remember to promote the ARPC RLF program in the local business communities and be mindful of potential borrowers that could be referred to the ARPC RLF for loans.



Environmental Planning



ARPC began a dedicated Environmental Planning Program in 2016:

- Apalachicola River and Bay Surface Water Improvement and Implementation Plan
- Chattahoochee to Bristol Trail Feasibility Study
- Riparian County Stakeholder Coalition
- Small Quantity Generator Program
- Brownfield Program



Environmental Planning



Short Term Successes

- Apalachicola River and Bay Surface Water Improvement and Implementation Plan
- Chattahoochee to Bristol Trail Feasibility Study



<https://www.americantrails.org/>

Environmental Planning



Long-term Projects and Involvement

- Riparian County Stakeholder Coalition
- Small Quantity Generator Program

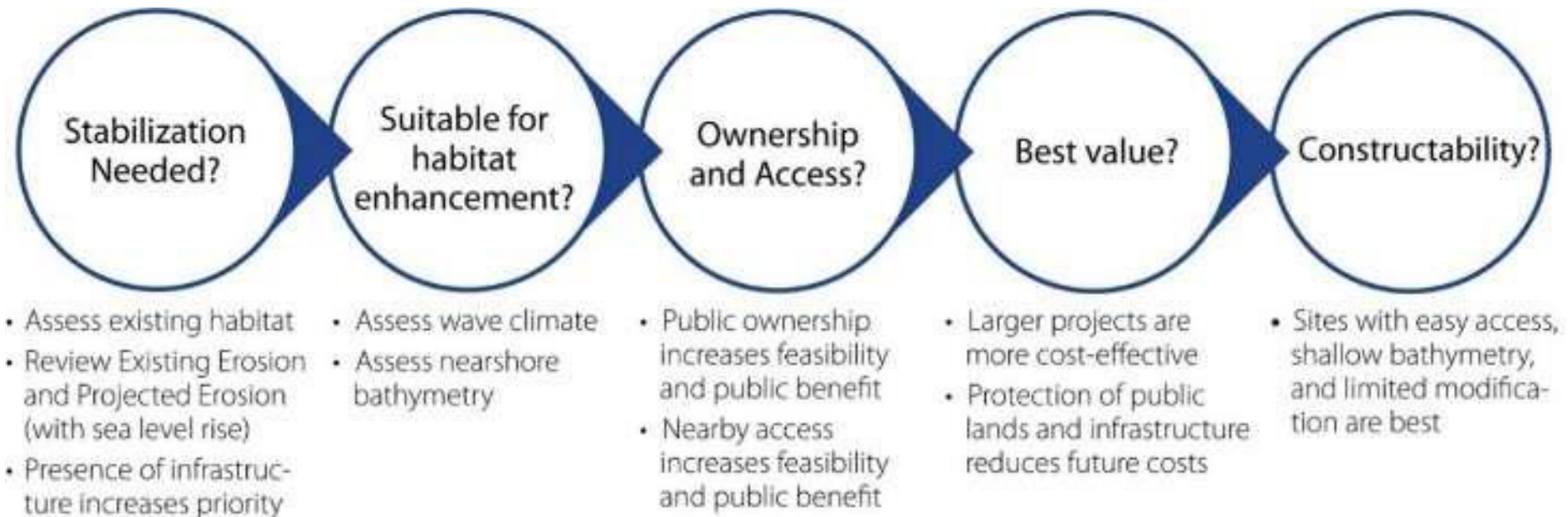


Environmental Planning



New Projects and Recent Submissions

- Brownfield Assessment Program
- Apalachicola Bay Shoreline Inventory



Transportation Planning

Staff: Kwentin Eastberg



The ARPC provides several Transportation Planning services/partnerships to the Region.

- Commission for the Transportation Disadvantaged
- Strategic Planning (FLZ)
- FDOT plan reviews
- Transportation & Public Health
- Partnering/Serving with other agencies.



Transportation Planning



Transportation Disadvantaged Program

The ARPC is the designated planning agency of 8 counties (all but Leon). The TD Program currently largest Transportation Planning project/program at the ARPC.

Contracted with the CTD to perform planning services to include recommending to the CTD, the CTC's every 5 years, staff to; and appointing members to the LCB, intermediary between local provider and CTD.



Transportation Planning



Transportation Disadvantaged Program

- Quarterly Meetings: outreach & coordination with local partners and LCB members
- Annual public hearing, board trainings bylaws, complaint & grievance procedures updates
- AOR/AER Reviews
- Annual evaluations of CTC
- TD Service Plans/updates



Transportation Planning



Regional Transportation Technical Assistance

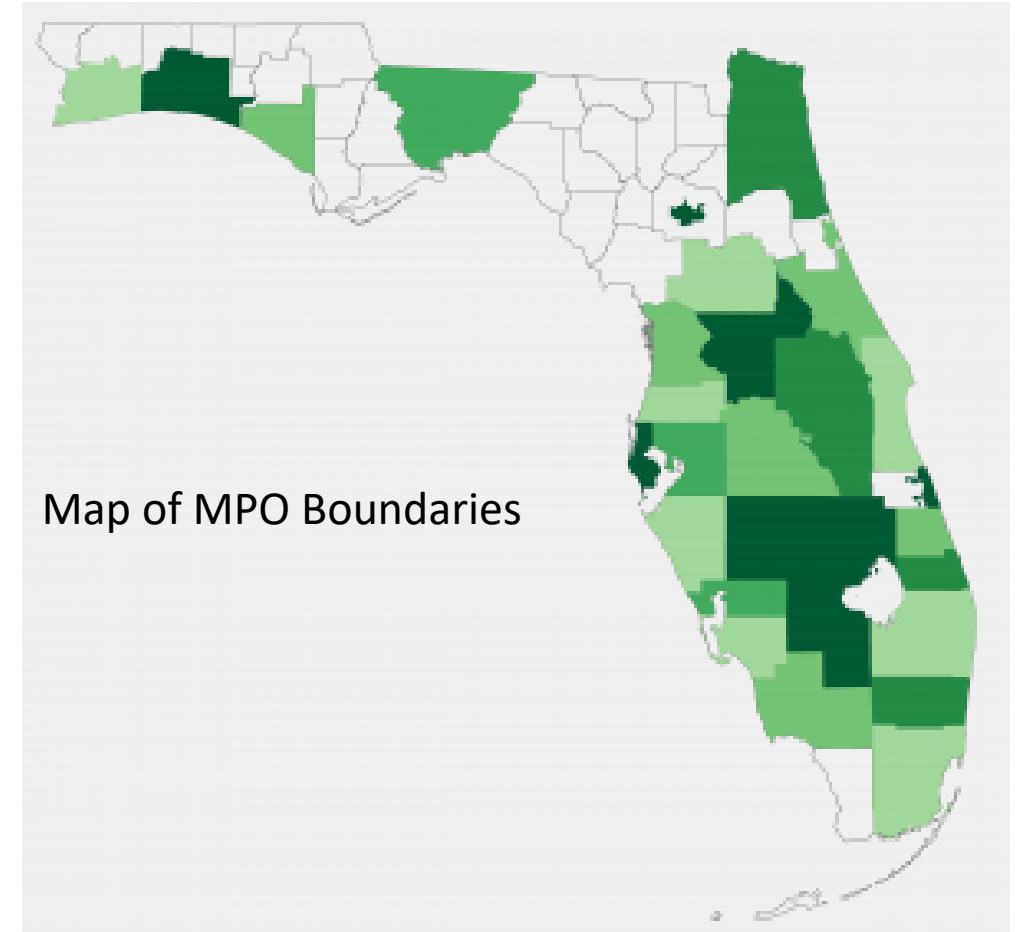
- Staff looks forward to the opportunities to partner with member counties and community partners to provide technical assistance on Transportation related projects
- TA Highlights include the Gulf to Gadsden Freight Logistics Zone, where staff led a very successful private/public partnership project, culminating in a Strategic Plan for the Region and a NADO Excellence in Transportation Award for the ARPC.



Transportation Planning



- Looking to the Future...
 - Establishment of an RTPPO
 - Rekindle TRIP Partnerships
 - Build staff within the Transportation Planning Program
 - Find and tap into additional funding sources to help Transportation projects and infrastructure throughout the Region



Emergency Management



- **Local Emergency Planning Committee**



- **North Florida Medical Reserve Corps**



- **State Agricultural Response Team**



- **Regional Emergency Management Planning, Training and Exercises**

EM – Local Emergency Planning Committee



- Since 1986, Federal legislation known as the **Emergency Planning and Community Right-to-Know Act** (EPCRA) mandates LEPCs to exist in every state
- LEPCs help:
 1. Increase public awareness of chemicals stored, used and released in your community
 2. Facilitate coordination between facilities, citizens, and emergency planning & response agencies
 3. To reduce the impact of accidental chemical releases on the environment and the community
- Apalachee LEPC Coordinator responsibilities include: organizing quarterly meetings, updating the LEPC Emergency Plan, planning, training, outreach, exercises and hazards analyses



EM – North Florida Medical Reserve Corps



- Medical and public health professionals
- Comprised of an 8 county region based in Tallahassee
- Over 45 trained and deployable volunteers
- Minimize surge to healthcare infrastructure
- Deploy into disaster areas to provide medical care and dispense medications
- Provide support to community public health events such as:
 - School Health Screenings
 - Influenza Clinics
 - Athletic Events – Tallahassee Marathon



EM – State Agricultural Response Team



- Private/public partnership provides SMEs, volunteers and resources for emergency incidents:
 - Pet Sheltering
 - Animal disease outbreak
 - Support food safety incidents such as food recalls
- Serve as a part-time planner assisting with:
 - Biennial exercise
 - Biennial statewide conference
 - Monthly Steering Committee Meetings
 - Planning and training activities



Regional Emergency Management

- Regional Evacuation Study
 - EM Toolkits
- Planning
 - Post Disaster Redevelopment Plans
 - Sea Level Rise Vulnerability Assessments
 - Comprehensive Emergency Management Plans
 - Local Mitigation Strategies
 - Continuity of Operations
 - Community Rating System
- Exercises
 - Health Department – POD Exercises
 - Domestic Security – Active Shooter
 - FLIRRT – Food Safety Exercises





Thank You

Apalachee Regional Planning Council

2507 Callaway Road, Suite 200

Tallahassee, FL

(850) 488.6211